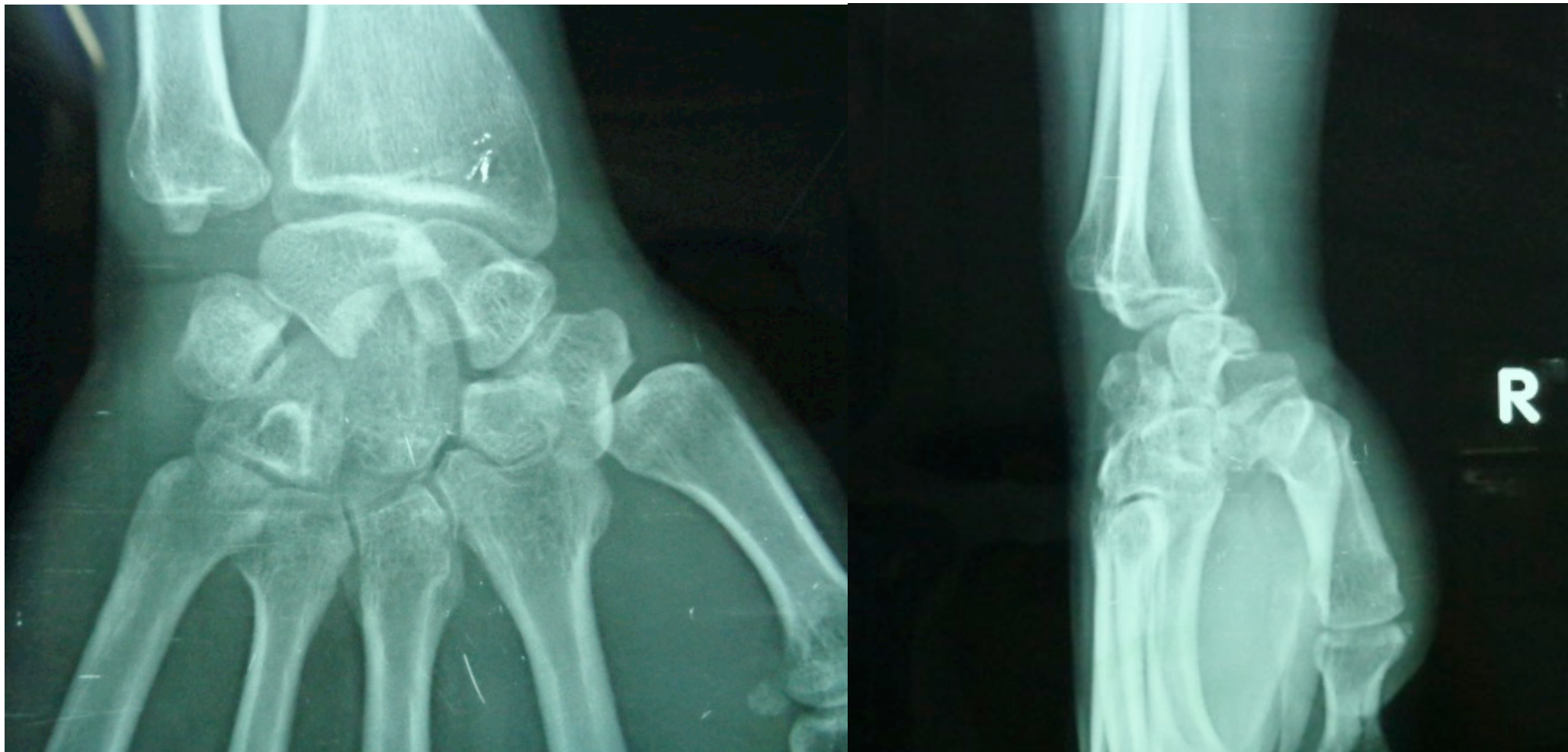


X QUANG CỔ TAY

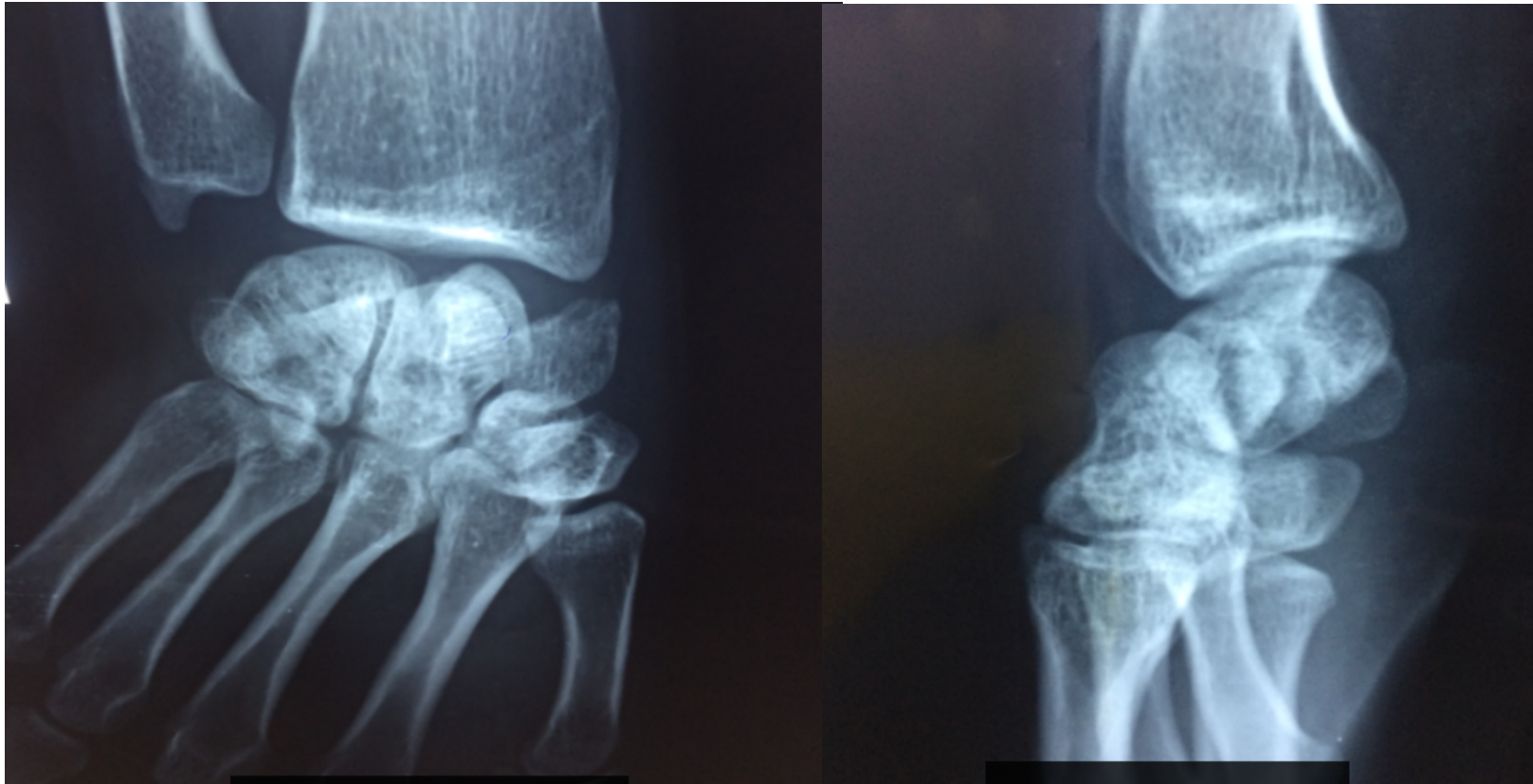
BS.LÊ NGỌC TUẤN

XQUANG

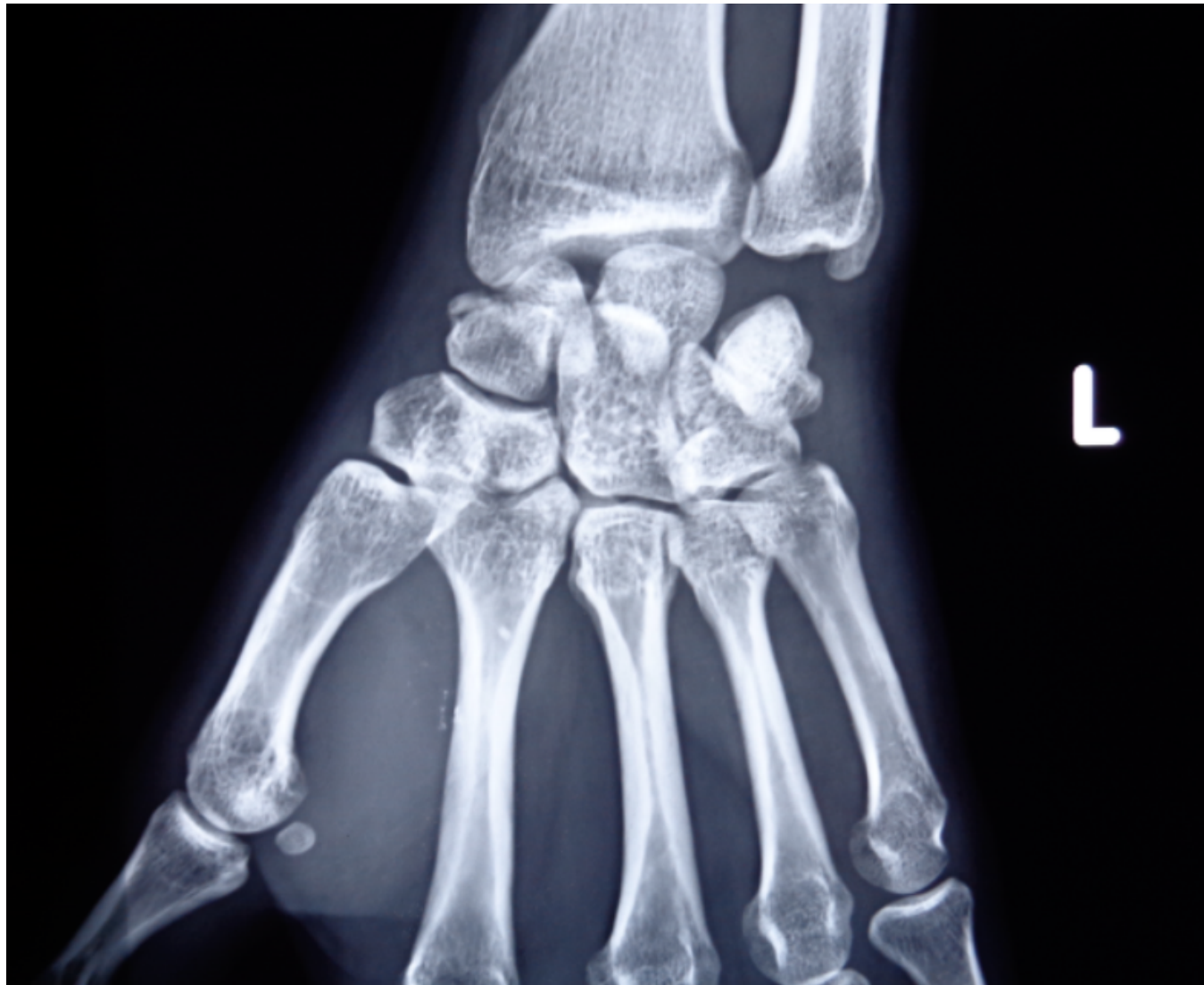
- BN Nguyễn Văn N, Nam, 1980, Đồng Nai



- BN Phùng Thị Ng, 1998, Gia Lai



- BN, Nguyễn Thị L, Nữ, 1978, Long An



Wrist bones - Normal X-ray (PA)

Hover on/off image to show/hide findings



Wrist bones - Normal X-ray (Lateral)

Hover on/off image to show/hide findings



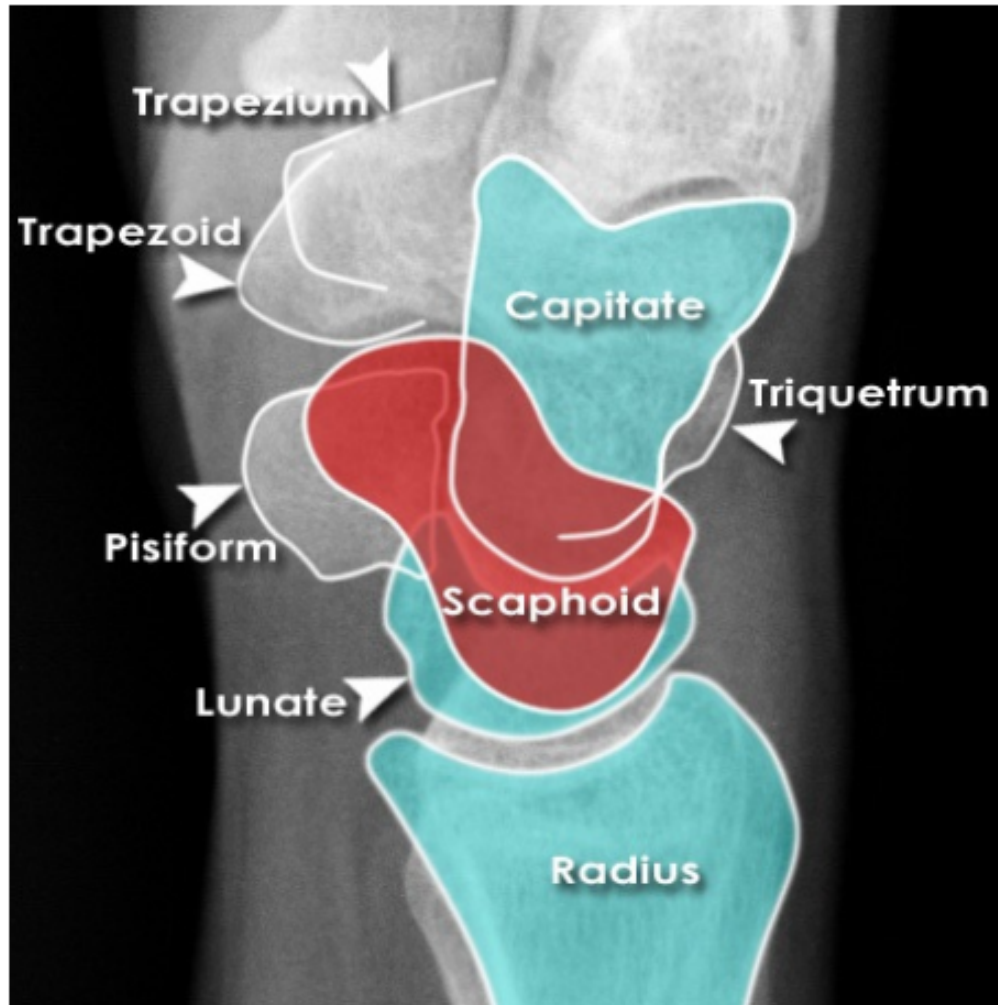
Wrist bones - Normal X-ray (PA)

Hover on/off image to show/hide findings



Wrist bones - Normal X-ray (Lateral)

Hover on/off image to show/hide findings



Wrist Analysis

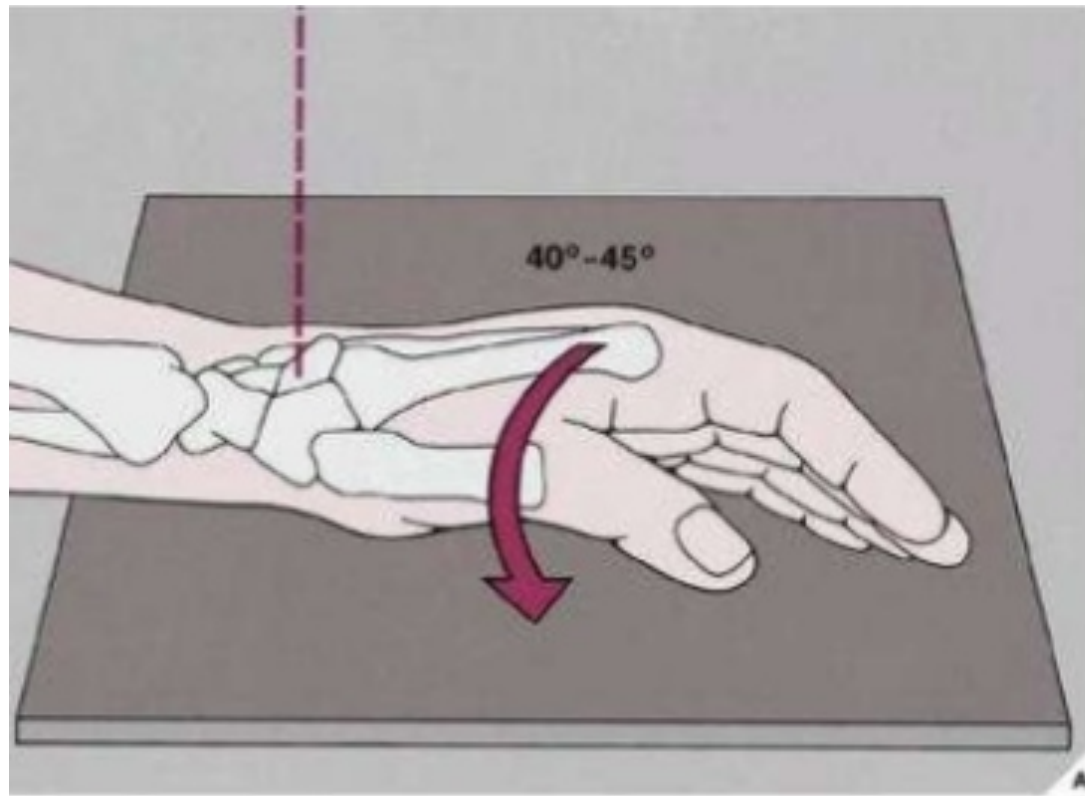
Radiography: Proper positioning?

Joint spaces: Look for parallelism

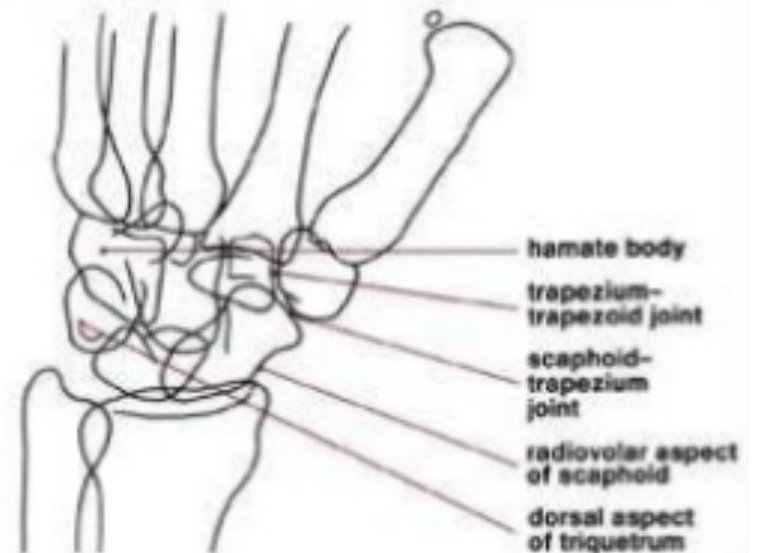
Carpal archs: Disruption indicates fracture or lig.tear

Shape: Lunate and Scaphoid

Axis: Normal, DISI or VISI



PRONATED OBLIQUE VIEW



Wrist joints - Normal X-ray

Hover on/off image to show/hide findings



1. PA with Ulnar Deviation



2. Lateral



3. Oblique



4. Scaphoid View



Ulnar Deviation



Radial Deviation



Normal scapholunate space

Hover on/off image to show/hide findings



Scapholunate widening - (Ulnar deviation view)

Hover on/off image to show/hide findings

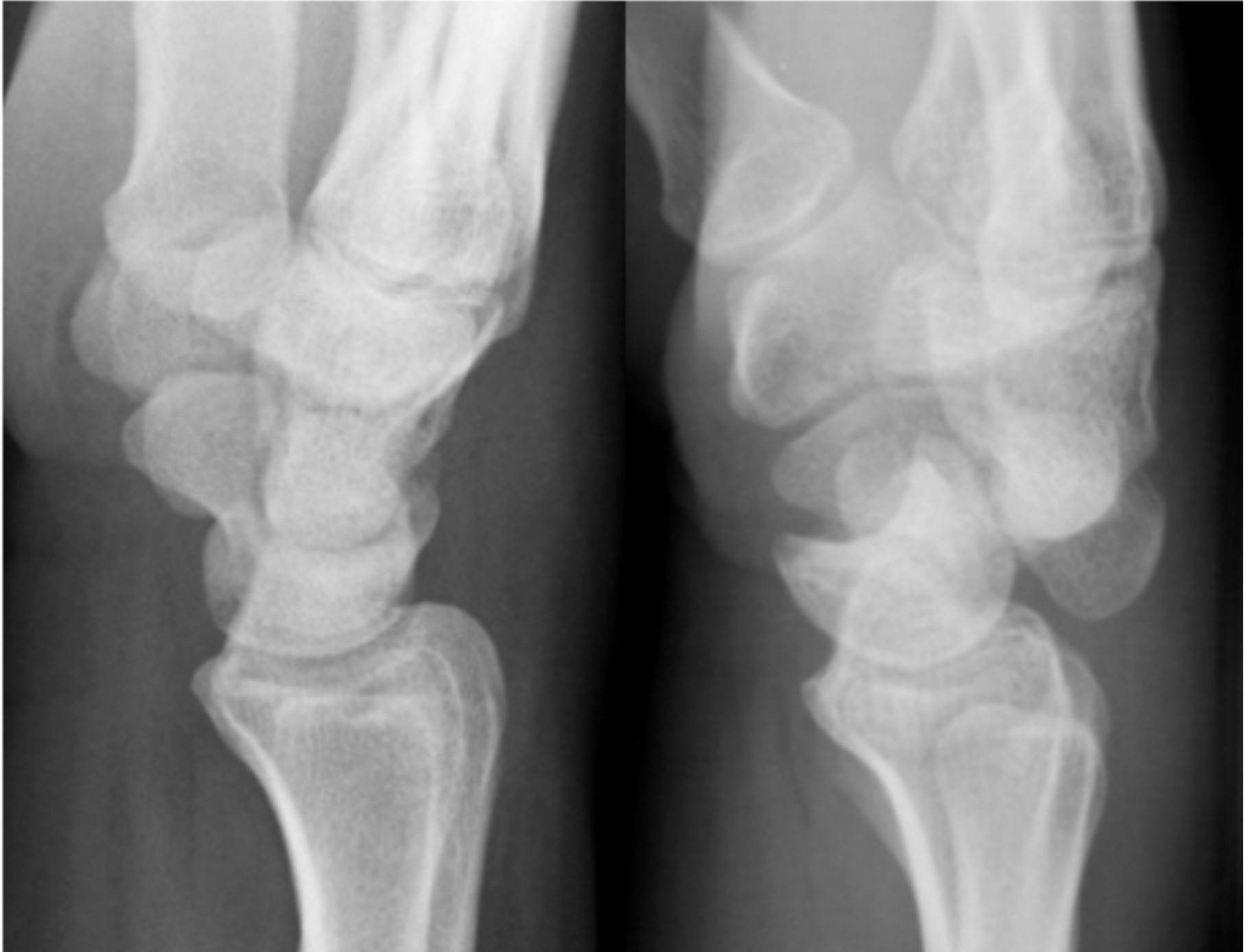


Scaphoid fracture - (Ulnar deviation view)

Hover on/off image to show/hide findings

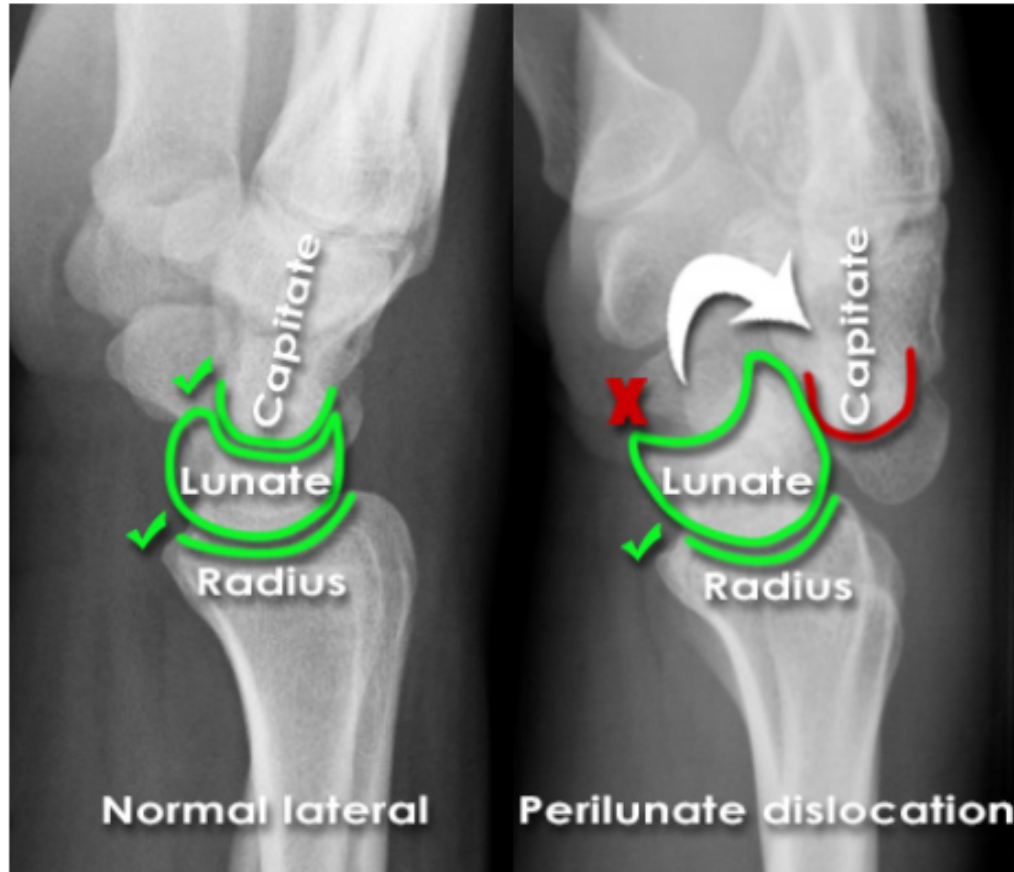


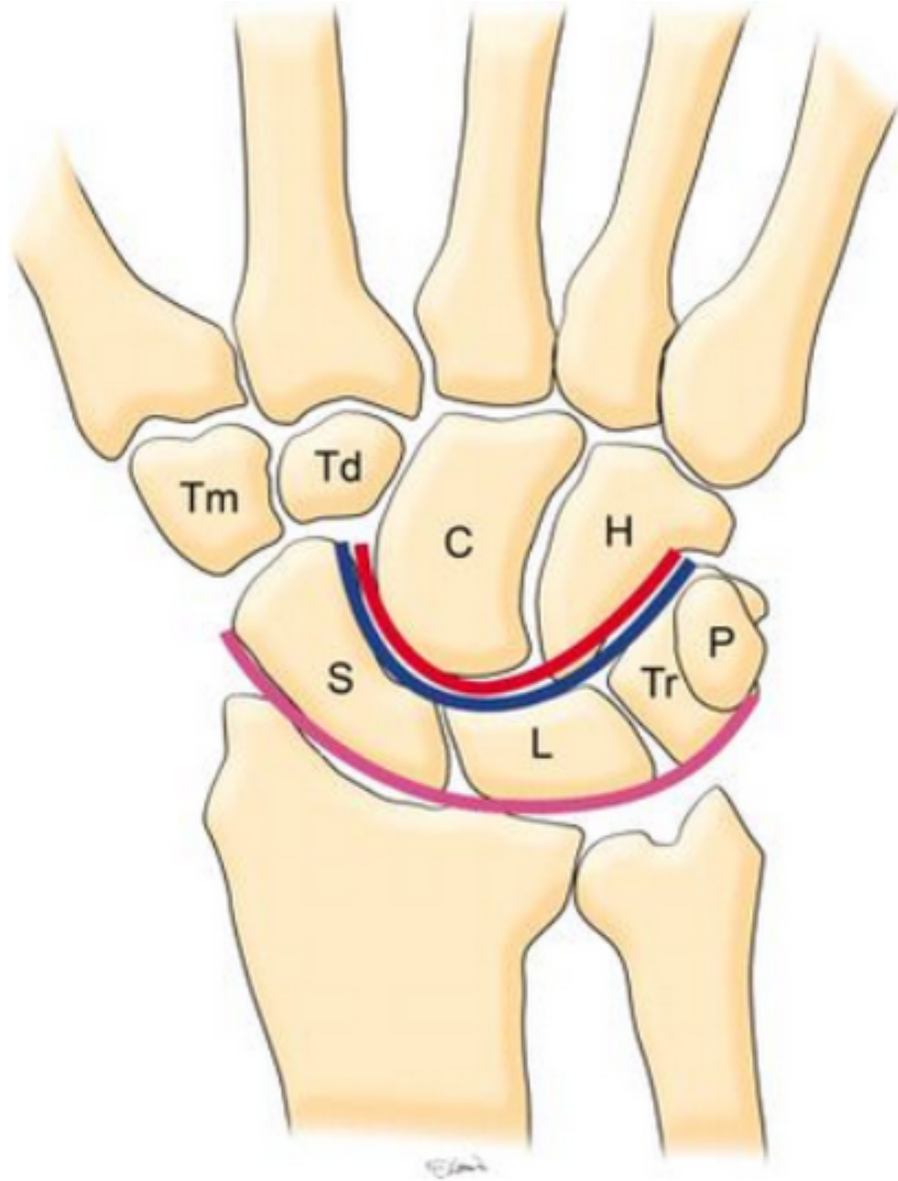




Peri-lunate dislocation

Hover on/off image to show/hide findings





XQUANG

❖ Phim thẳng: 3 vòng

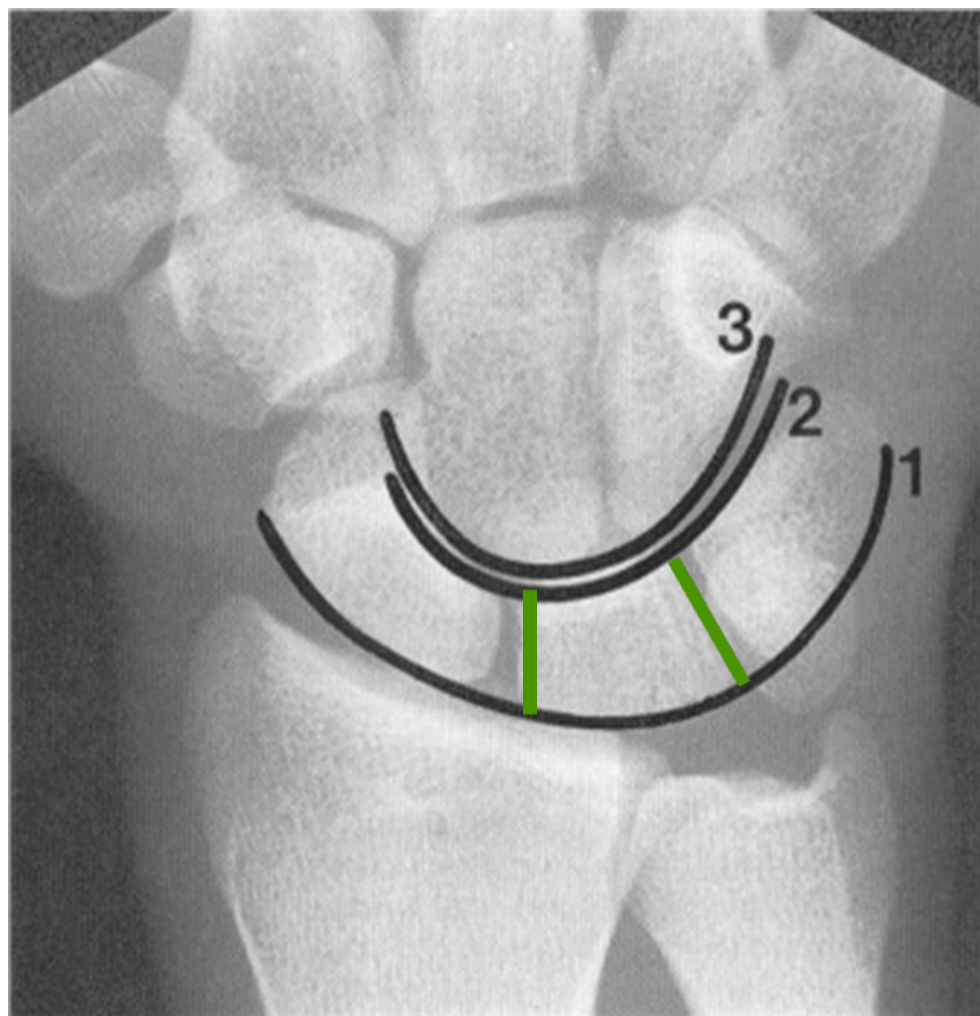
cung cổ tay (Gilula)

đều đặn liên tục

■ Khe khớp xương cổ tay

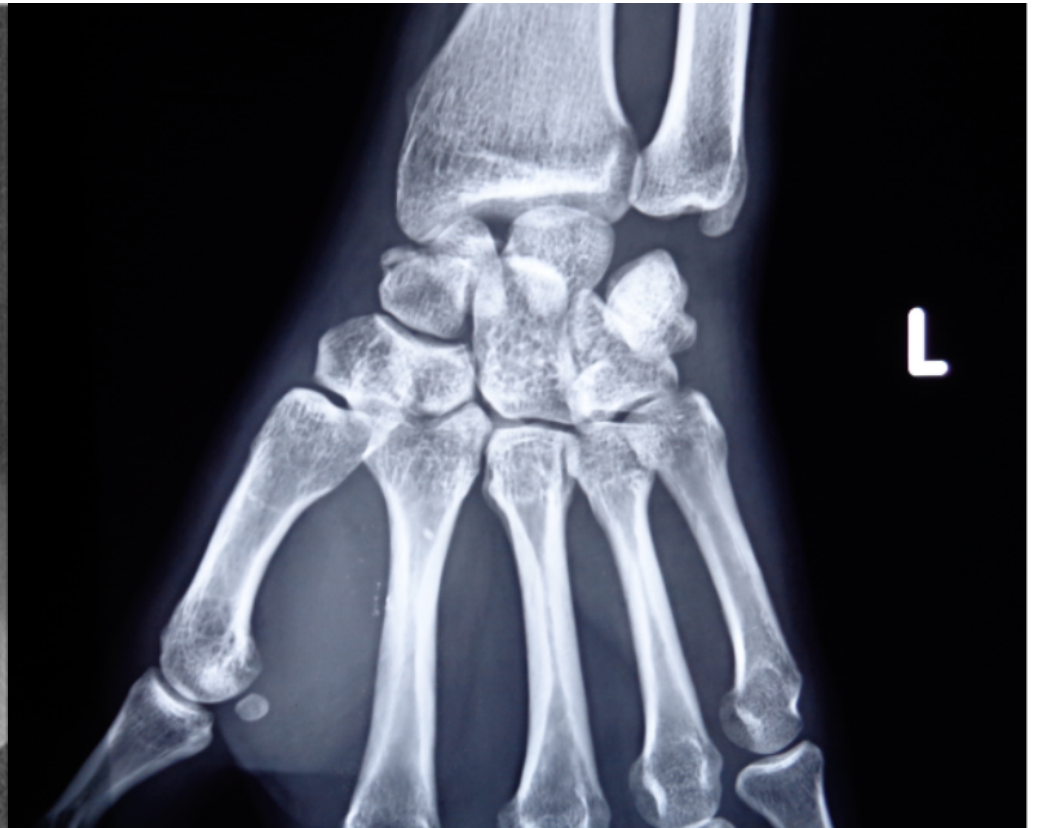
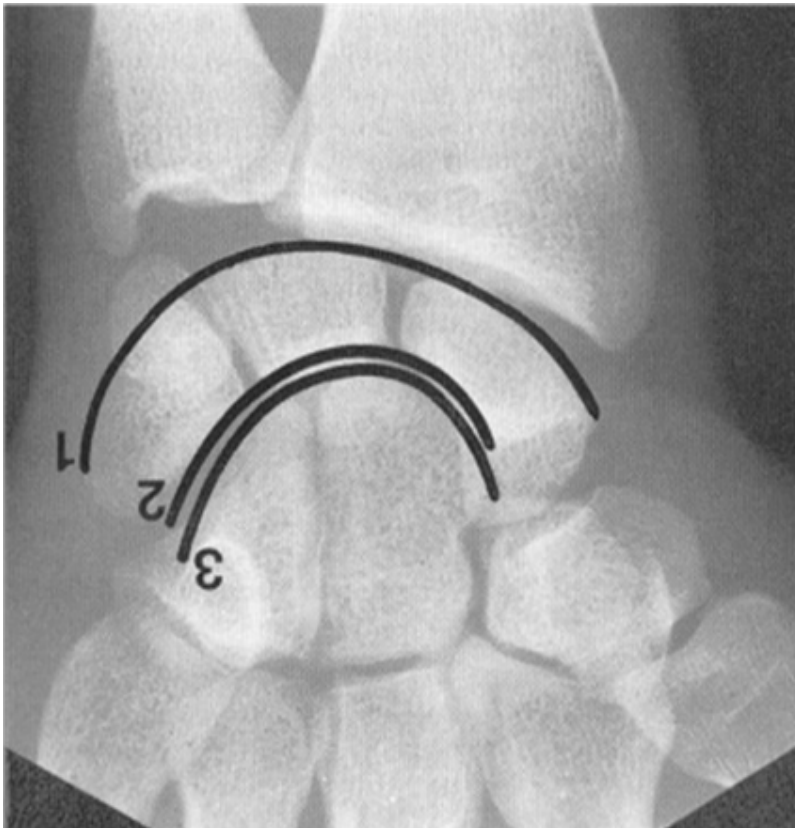
$\leq 2\text{mm}$.

■ Xương nguyệt: tứ giác



XQUANG

Vòng cung Gilula không đều đặn



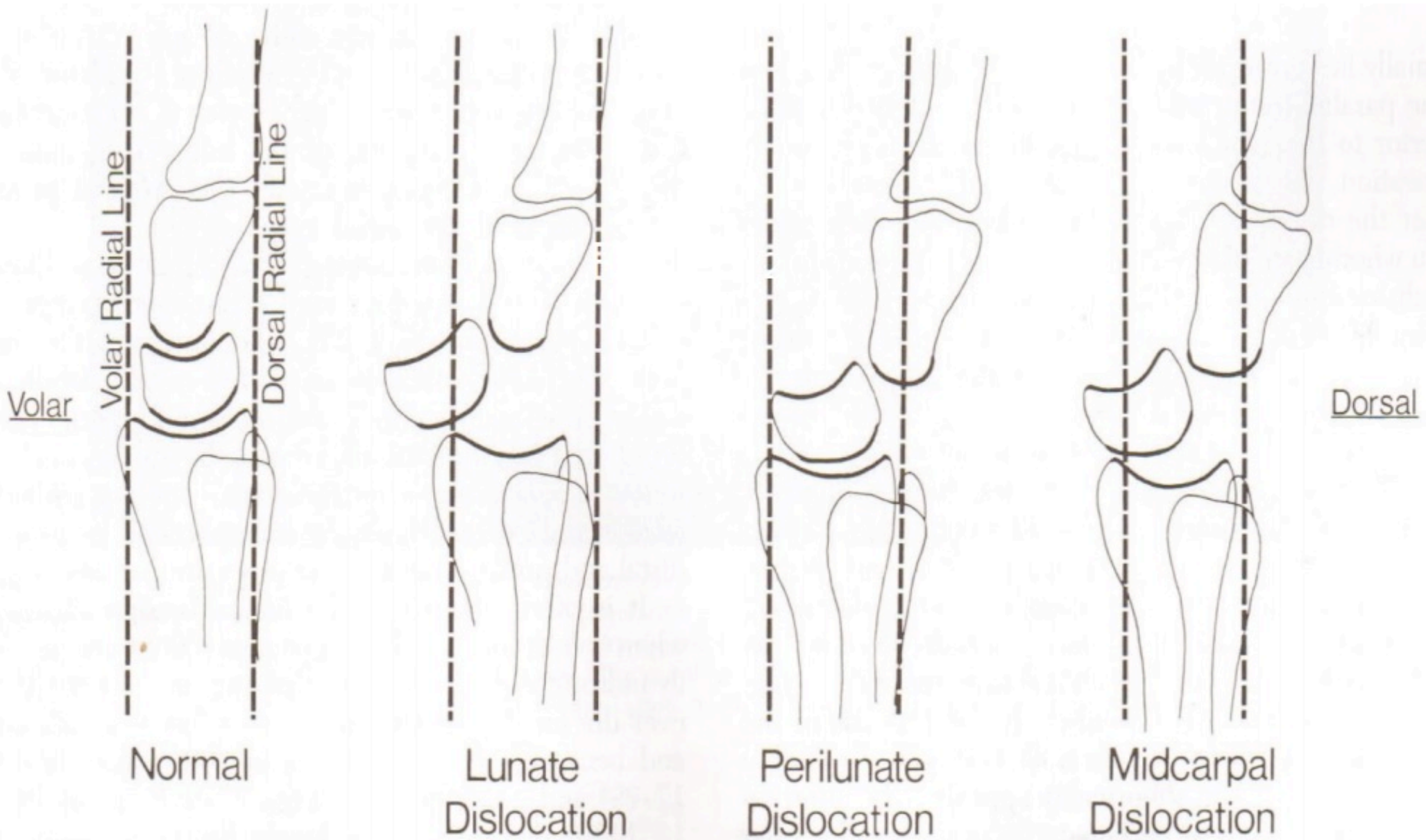
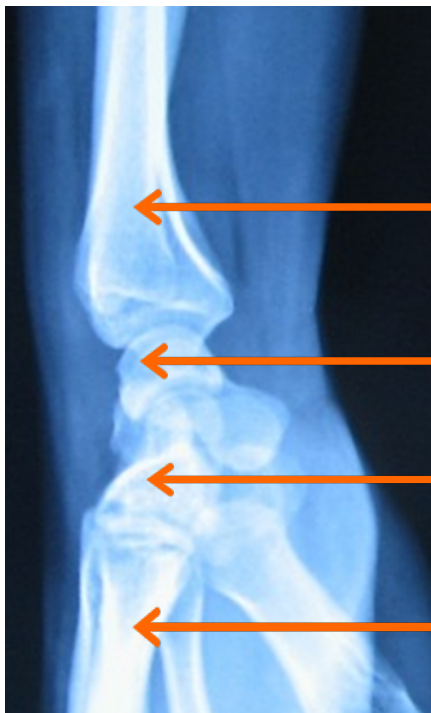


Figure 17-97. Cortical arcs and volar and dorsal radial lines on lateral view of the wrist.

X-QUANG

❖ Phim nghiêng:

Bình thường



← ÑDXQ

← x. nguyệt

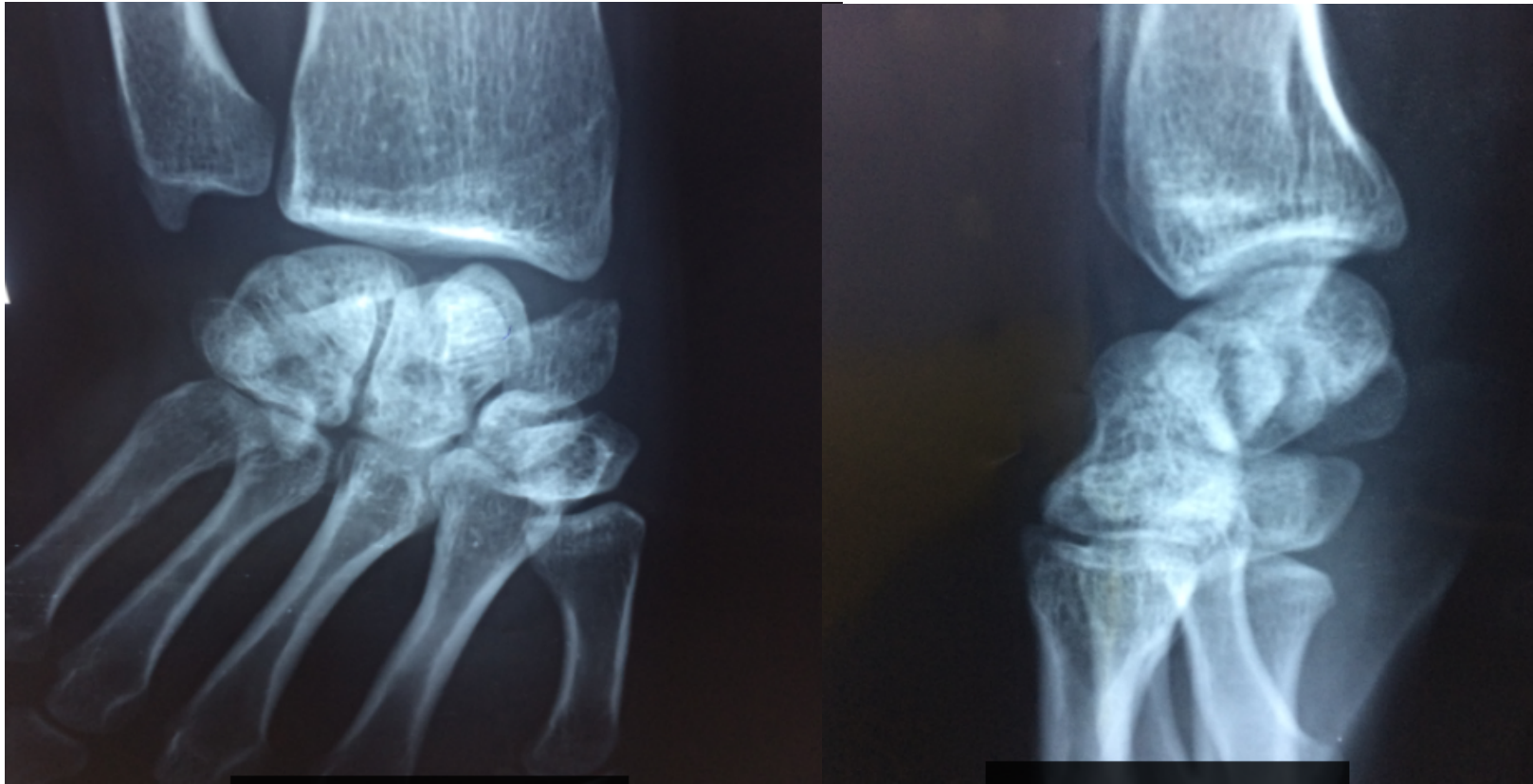
← x. cả

← x. baøn
III

trật quanh nguyệt



- BN Phùng Thị Ng, 1998, Gia Lai



- BN.Nguyễn Trung Th, Nam, 1979, Vũng Tàu



CẢM ƠN QUÝ THẦY!

